



IPS SYSTEM CO.,LTD have been incorporated in the Republic of South Korea in year 2000.

Company playing active and important roll on following in South Korea and Overseas markets.

- PCI Motion control board / PCI Vision board
- Vision Aligner / LCD chip on glass bonder
- Solar cell production Line
- Industrial digital camera / military thermal camera
- Surface Mounting Technology (SMT) screen printer / High speed Inkjet printer
- COF AVI Inspection M/C / PCB pattern O/S AOI M/C
- Copper Paste Mass production for PCB and Solar Cell
- World first high thermal sink metal PCB factory
- Developing direct printing thin line patterning (L/S 10 um) for semiconductor FC-BGA
- Factory for LED high bay light



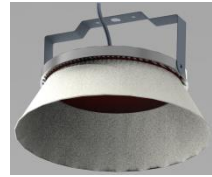
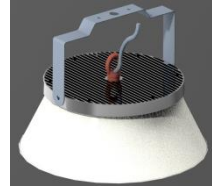
KEY Technology

- World highest conductive copper printing paste for PCB or Semiconductor
- Transparent conductive silver ring inkjet printer for Touch screen and HJT SOLAR CELL
- LED high bay light and car head light
- Solar module ,inverter, monitoring software, home system, streetlight



HIGH BAY LED LIGHT 100-200 W (FACTORY & STREET LIGHT)

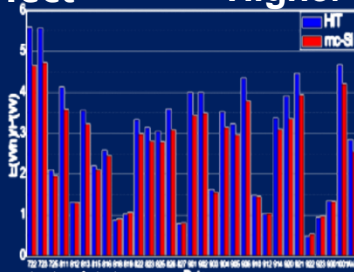
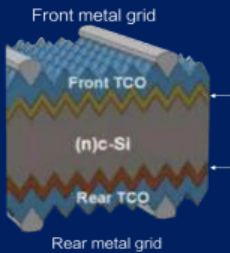
| item | World wide now | IPS new |
|------------------------|-----------------|---------------|
| Module anti water/Dust | IP66 | IP66 |
| Temperature | 90c | 70c |
| Thermal conductivity | 2 W/mk | 120 W/mK |
| input current | 1300 mA | 1300 mA |
| input power | 150 W | 150 W |
| input voltage | 110 dcV | 110 dcV |
| Light efficiency | 150 Lm/w | 180 Lm/w |
| Color temperature | 5,655+-355 k | 5,655+-355 k |
| CRI | >78 | >78 |
| LED No. | 188 | 188 |
| Size & Weight | 410*280*291 3kg | 300*12T 700 g |
| Price | Market price | lower |



SOLAR MODULE (HJT TECHNOLOGY)

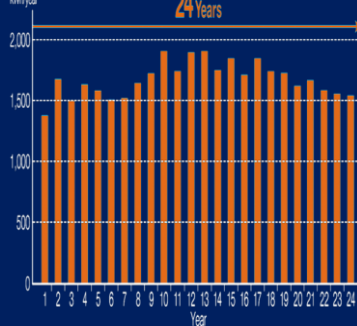
HJT No LID/PID Effect

Higher Energy Production



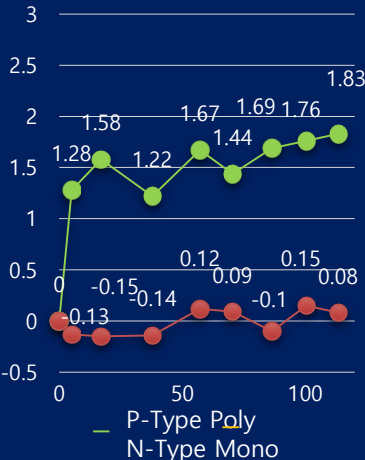
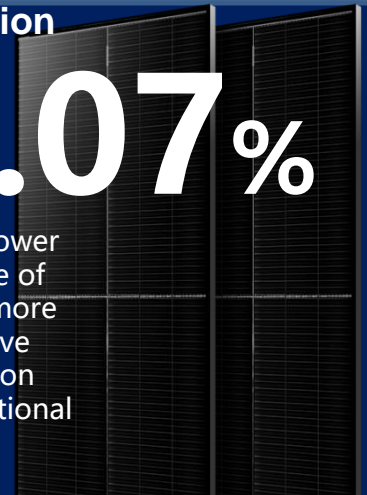
Location: Osaka, Japan

Installation: March 1993



11.07%

The effective power generation time of HJT is 11.07% more than the effective power generation time of conventional cells.



| | cell | size | weight | power |
|--------|------------|----------------|--------|-------|
| 166mm | 72-pattern | 2094*1038*30 | 27.0 | 480 W |
| 210 mm | 144 | 2300 *1038 *36 | 35 | 680 W |

- 1、 The HJT cell is designed with conductive TCO surface and insulation-free layer, so there is no build-up surface layer charge.
- 2、 25 years of HJT module application with no customer feedback of PID occurrences.
- 3、 No PID occurrences after in-house and third party reliability testing.

iMars BG
Three Phase Grid-tied Solar Inverter

BG40KTR / 50KTR / 60KTR / 70KTR



Monitoring solution:



Efficient

- Integrated intelligent DC combiner and surge protection improve system feasibility and lower the system cost.
- Max efficiency is up to 98.5%, wide input voltage range, adapt to all kinds of solar panels and string configuration.
- Adopt the latest technologies and combination of T-type three level topologies and SVPWM.



Smart

- AC output power is adjustable between 1-100%.
- Smart grid adaptive to meet the requirements of various power grid access.
- Variety of monitoring modes: APP (one-button registration), large screen data monitoring center, cloud monitoring platform.
- Support RS485, GPRS, WIFI, GPRS200.



Reliable

- IP65 protection level, suitable for various installation environments.
- Bus capacitors consist of advanced film capacitors, designed with the latest thermal simulation technology for longer lifespan.
- Insured by well-known international property insurance company (AIG for Products /Completed Operations Liability Insurance).



Simple

- High power density, small size.
- Modular design, easy to maintain.



Monitoring software



Mounting system



PV cable



PV combiner box(circuit breaker)



MC4 connector



AC Distribution Cabinet



Transformer



Cleaning Robot



Power cable

Specification

| | BG40KTR | BG50KTR | BG60KTR | BG70KTR |
|---|--|---------|---------|---------|
| Input (DC) | | | | |
| Max. DC input power (W) | 55000 | 66000 | 72000 | 77000 |
| Max. DC input voltage (V) | 1100 | | | |
| Starting voltage (V) / Min. operation voltage (V) | 200/570 | | | |
| MPPT Range(V) / Rated input voltage(V) | 570-950/740 | | | |
| Number of MPPT / String per MPPT | 1/10 | 1/12 | 1/14 | 1/14 |
| Max. DC current (A) Per MPPT x Number of MPPT | 74x1 | 90x1 | 120x1 | 120x1 |
| DC switch | Integrated | | | |
| Output (AC) | | | | |
| Rated output power (W) | 40000 | 50000 | 60000 | 66000 |
| Max. AC output current (A) | 64 | 80 | 96 | 96 |
| Grid voltage range | 3~N/PE, 230/400, 310~480 V ac | | | |
| Grid frequency range | 50 Hz (47~51.5 Hz) / 60 Hz (57~61.5 Hz) | | | |
| Power factor | -0.8~+0.8 (adjustable) | | | |
| THDi | < 3% (at rated power) | | | |
| AC output | Three-phase (L1, L2, L3, N, PE)(L1, L2, L3, PE) | | | |
| System | | | | |
| Cooling method | Smart cooling | | | |
| Max. efficiency | 98.90% | 98.90% | 99.00% | 99.00% |
| Euro-efficiency | 98.50% | 98.50% | 98.50% | 98.50% |
| MPPT efficiency | 99.90% | | | |
| Protection degree | IP65 | | | |
| Self-consumption(at night) | <0.5 (W) | | | |
| Topology | Transformationless | | | |
| Operating temperature range | -25°C ~+60°C (derate after 45°C) | | | |
| Relative humidity | 0~95%, no condensation | | | |
| Protection | PV array insulation protection, PV array leakage current protection, Ground fault monitoring, Grid monitoring, Island protection, DC monitoring, Short current protection etc. | | | |
| Noise (dB) | < 60 | | | |
| Display and communication | | | | |
| Display | 3.5 inches LCD display, support backlit display | | | |
| LCD language | English, Chinese, German, Dutch | | | |
| Keyboard | Integrated | | | |
| Communication interface | RS485 (standard) ; WIFI, GPRS200 (optional), PLC carrier communication (optional) | | | |
| Mechanical parameters | | | | |
| Dimension (H x W x D mm) | 810 X 45 X 235 | | | |
| Weight (kg) | 53 | | | |
| Installation | Wall mounting | | | |
| Others | | | | |
| DC terminal | Waterproof terminals, PC (optional) | | | |
| Grid qualification | NEC 3200-2013, TUNCE, VDE 0126-1-1, VDE-AR-N4105, G59, C10/1, TF32-1, AS/NZS, 4777.2:2015, EN 61000-6-1, IEC 61000-6-1, IEC 62109-1:12, IEC 62109-2:12, IEC 62109-1:2010, IEC 62109-2:2010 | | | |
| Safety certificates / EMC certificates | VDE-AR-N4105, AS 4777.6 100, CCC | | | |
| Factory warranty | 5 years (standard) | | | |

IPS Solar Power System



- Adopt lifepo4 battery ,high energy storage and over 3000 cycle time
- Double protection both BMS and charger
- Pure sine wave inverter with MPPT solar controller
- Metal casing for better heat dissipation performance
- Display woking status
- Double AC output socket of 1500w Strong Power
- Multiple charging mode
- Hand bars and wheel for convenience move

| | | |
|-------------------------|---|----------------------------------|
| Products name | Portable Solar generator kit system | |
| Main Parts | solar converter, mono solar panel, solar mppt controller, lifepo4 battery | |
| Products Model | JHP-1500 | |
| Built-in inverter power | 1500W | |
| Mono Solar Panel | 400W | |
| Built-in Battery | 1536Wh | |
| Input | Input Voltage | 145~275VAC(220VAC) |
| | Main Power | 220VAC (50/60Hz) |
| Output | Output Voltage | 220VAC |
| | Output Frequency | 50/60Hz |
| | Output Waveform | Pure Sine Wave |
| | DC Output Port | USB outputs *2 , 12VDC outputs*2 |
| N.W | 28KG | |
| Output Voltage | 12V DC, 5V USB DC, 220V AC | |
| Dimension LxWxH(mm) | 450x200x540 | |
| Acquired certifications | UL,PSE, FCC, CE, UN38.3,MSDS ,ROHS. | |

HOME SOLAR SYSTEM (3000 W)



| | | |
|-------------------------|---|----------------------------------|
| Products name | Portable Solar generator kit system | |
| Main Parts | solar converter, mono solar panel, solar mppt controller, lifepo4 battery | |
| Products Model | JHP-3000 | |
| Built-in inverter power | 3000W | |
| Mono Solar Panel | 800W | |
| Built-in Battery | 3072Wh | |
| Input | Input Voltage | 145~275VAC(220VAC) |
| | Main Power | 220VAC (50/60Hz) |
| Output | Output Voltage | 220VAC |
| | Output Frequency | 50/60Hz |
| | Output Waveform | Pure Sine Wave |
| | DC Output Port | USB outputs *2 , 12VDC outputs*2 |
| N.W | 28KG | |
| Output Voltage | 12V DC, 5V USB DC, 220V AC | |
| Dimension LxWxH(mm) | 450x200x540 | |
| Acquired certifications | UL,PSE, FCC, CE, UN38.3,MSDS ,ROHS. | |

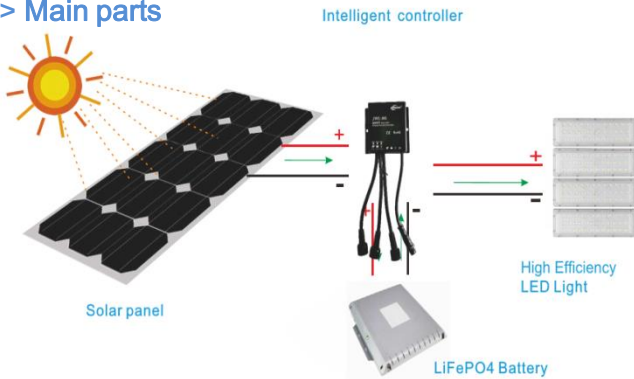
SOLAR STREET LIGHT (20- 100W)



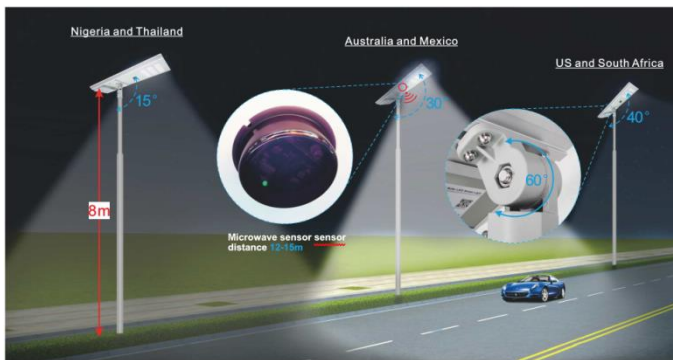
> Separated street light



> Main parts



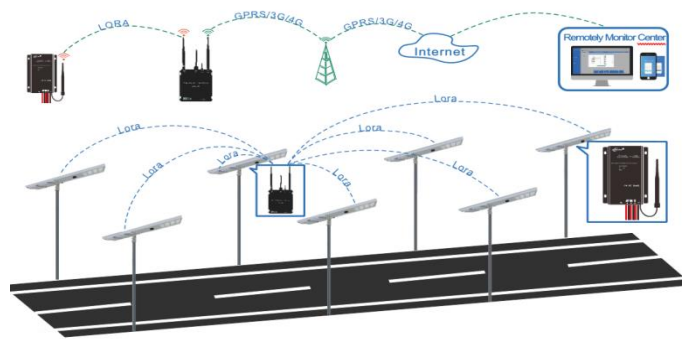
> Feature



> Anti wind Level



> IOT LoRa smart control and monitor system



| Night LED working time + smart sensor | Sensor time | Some one pass by | No one pass by |
|---------------------------------------|-------------|------------------|----------------|
| | 4 hours | 100 % | 50 % |
| | 2 hours | 60 % | 30 % |
| | 6 hours | 40 % | 20 % |

IOT LoRa intelligent control system can assist you to learn location and reason of broken one easily, setting different working modes for summer and winter or rainy season and dry season by one click, calculating how much cost your project saved for the government.

Reply question
within 2 hours

Provide quality
assurance service

Service
support

Strict quality test
Before shipping

The technical team
provides
Professional support

IPS SYSTEM CO.,LTD

4-8 YANGJIMAEUL 3 RO GWACHEON CITY, GYUNGGI -DO SOUTH KOREA
www.ipss.co.kr

AUTORIZED DEALER FOR SOUTH EAST ASIA, MIDDLE EAST, AFRICA

GREEN GALAXY EPC PTE LTD

1 NORTH BRIDGE ROAD ,#18-03 HIGHSTREET CENTRE,
SINGAPORE 179094

CALL : +6598129046, Email : greengalaxyepc@gmail.com

AUTORIZED AGENT FOR AFRICA

STEENBERG COPORATION PTY LTD

17TH KEURBOOM STREET, WILRO PARK , JOHANNESBURG,
SOUTH AFRICA

Email : steenbergcoporation@gmail.com